

### Rubio Monocoat Pre-Aging

Get the look of a reactive stain, without the disadvantages

A new floor with an aged look. It is a flooring trend that is very popular right now. In addition to effectively smoking and fuming wood, there are many reactive products to provide a weathered or aged look to the wood.

Rubio Monocoat Pre-Aging is a high-quality, non-reactive pre-treatment that creates the look of reactive stains, but without the drawbacks. Rubio Monocoat Pre-Aging is available in 10 standard colours, ranging from a lighter to a darker smoked look, including the warm, green/brown undertones that are so popular. All colours can be mixed with each other, so that the client can get exactly what he wants.



#### PRODUCT INFORMATION

##### › Unique characteristics

- Non-reactive water-based pre-treatment
- Stable colour that can easily be reproduced
- Excellent spot-resistance after treatment with Rubio Monocoat oil
- Deep colouring with subtle accents
- Applicable to virtually all wood types, including those without tannins
- pH-neutral product, as opposed to reactive pre-colours
- Does not affect the quality of the finishing coat
- Minimal odour
- Free of transport restrictions
- Also colours the hard parts of the wood and the sapwood
- No overlaps

##### › Technical features

- Physical state at 20 °C: Liquid
- Aqueous
- Odour: Sweet odour
- Flashpoint: > 100°C
- Density: approx. 1 kg/L
- Boiling point: approx. 100 °C
- Drying time: 24 hours with good ventilation

##### › Packaging

Plastic bottle of 100 ml and 1 L

Plastic can of 5 L and 25 L

Sample set: 10 colours x 100 ml including 'Rubio Monocoat Colour Card Pre-Aging small'

##### › Storage

The product can be stored in a dry place for 36 months in the original container.  
Store in a well-ventilated and frost-free space.

##### › Consumption

1L = 15 – 20 m<sup>2</sup> / 1L = 150 – 200 ft<sup>2</sup>, depending on the sort of wood and the preparation.

*These usages are merely indicative. It is always recommended to make a sample in order to calculate the exact usage.*

##### › Colours

The 10 Rubio Monocoat Pre-Aging colours can be found on the next page.

› Colours

Fumed look



FUMED INTENSE



FUMED LIGHT

Authentic Amonia look



AUTHENTIC #1



AUTHENTIC #2



AUTHENTIC #3



AUTHENTIC #4



AUTHENTIC #5



AUTHENTIC #6

Smoked look



SMOKE INTENSE



SMOKE LIGHT

Colours shown are on oak.  
The colours shown are for reference only and are not binding.

### APPLICATION INFORMATION

#### › Instructions for use

- STEP 1** Sand surface without making scratches and vacuum.
- STEP 2** Apply Pre-Aging to the surface using a painters tray and the Rubio Monocoat Microber Bristle Pad. For edges/corners: apply with a cut in pad then smooth the Pre-Aging using a white pad. Work along the length of the boards, in widths of 10-15 inches. Avoid forming puddles.
- STEP 3** Allow to dry for about 24 hours and ensure sufficient ventilation.
- TIP:** It is perfectly normal for the surface to dry in 'spots' that follow the grain pattern. As long as the surface still looks 'spotted', it is not dry yet.
- STEP 4** After drying (approx. 24 hours if there is sufficient ventilation), break the raised wood fibres using a buffer with a red pad. Vacuum and finish with a colour from the Rubio Monocoat Oil Plus 2C range. No buffing needed.

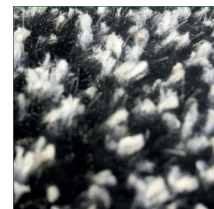
#### IMPORTANCE OF THE CORRECT TOOLS

After intense testing, this application method is the preferred one of the Rubio Monocoat specialists. Use of the Rubio Monocoat Bristle Pad plays a crucial role in this and leads to the easiest, quickest application method and the best coverage.

#### RUBIO MONOCOAT BRISTLE PAD

The pad is not as wide as other microfiber pads, for optimum user comfort. The structure of the fibres has been developed in such a way that the product is not sucked up, which would result in unnecessary high consumption. The hard microfibers in the pad ensure less resistance during the application of the product. Unlike other microfiber pads, you don't have to push so hard on the pad and the product is distributed easily and evenly.

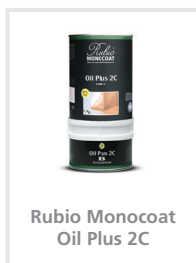
**TIP** The combination of Rubio Monocoat Bristle Pad followed by the red pad as described above, results in very beautiful colour shades and depth in the colours.



#### › Tips & Tricks

- Take into account that the basic colour, the grain structure and the porosity of the wood may affect the end result. A wood type with a red undertone, for example, will have a different effect than new, light-coloured pinewood. That is why it is important to apply a sample first.

#### › Related products



#### ATTENTION

This product is a pre-treatment and does not protect the wood. It needs to be combined with one of our Rubio Monocoat finishing products for maximum protection.

Check the packaging and the safety data sheet for more details.

For our complete assortment of products for the protection and colouring of interior and exterior wood, please visit [www.rubimonocoat.com](http://www.rubimonocoat.com)

YOUR DISTRIBUTOR:

**LIABILITY:** It is the user's responsibility to establish, through his own tests, whether the product is suitable for the chosen application. In no case can Muylle Facon BV be held liable for any consequential damage. The information above may be subject to changes, which will be published in the updated versions of the technical data sheet. We cannot be held liable for poor results due to causes that are not related to the quality of the product. This technical information has been drawn up based on the currently available information and knowledge. The most recent technical data sheets can be requested or are available on the website. **Date of TDS: 8/04/2020. Check the safety information before using the product.**



# Rubio<sup>®</sup> MONOCOAT

MUYLLE  FACON

**Muylle Facon BV**  
Ambachtenstraat 58  
8870 Izegem (BELGIUM)

Phone +32 (0) 51 30 80 54  
Fax +32 (0) 51 30 99 78  
[info@muyllefacon.be](mailto:info@muyllefacon.be)

[www.rubimonocoat.com](http://www.rubimonocoat.com)